

AVAILABLE FOR SALE

26.6  
Acres

10  
Acres

10  
Acres

Crane Solar Garden

Theodore Christianson Dr

©2026 Imagery ©2026 Airbus, Maxar Technologies, USA

**19750 - 19758 Hwy 7  
Lester Prairie, MN 55354**

TIM LITTLE | Chief Commercial Broker | 952.432.4900 | TCtimlittle@gmail.com  
SUSAN MALL | Commercial Associate | 651-402-5393 | SusanM@MNRealEstateTeam.com

# Listing Specifications

- Frontage access from HWY 7
- Light Industrial allowed - (Possible Mini Storage Site)
- 26.6 acres, adjacent to Auto Salvage and future Solar Garden

## Land Size

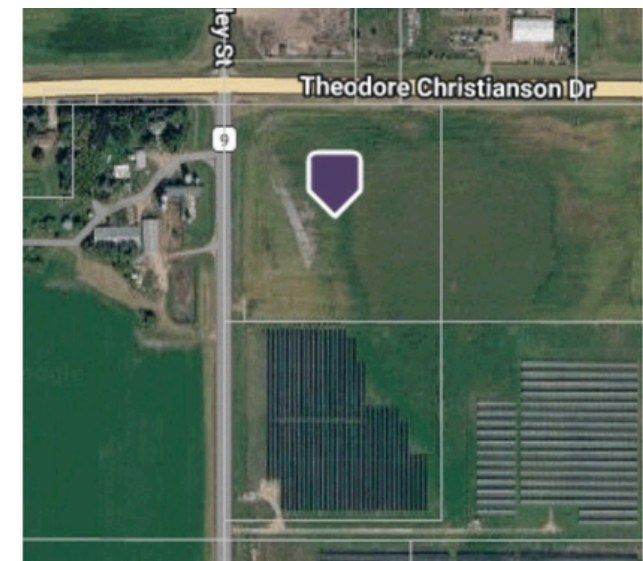
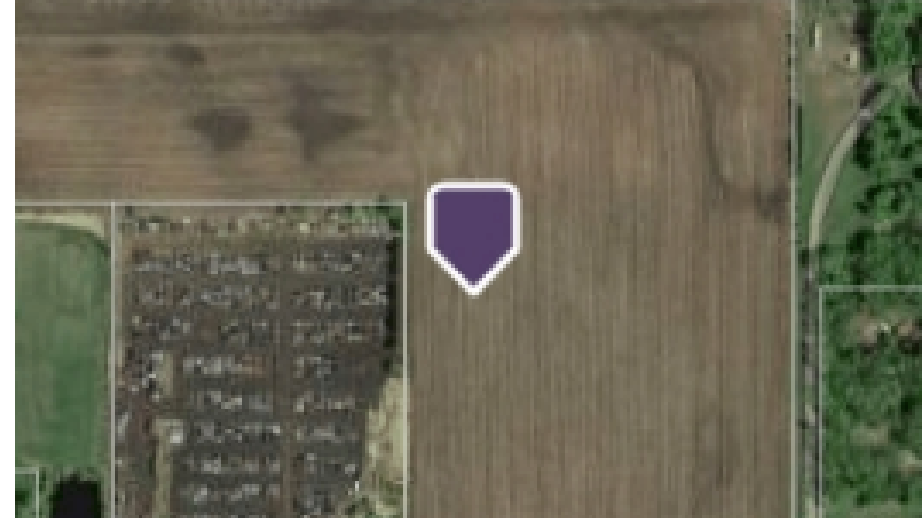
26.6 Acre Parcel  
10 Acre Parcel  
10 Acre Parcel  
Total Acres: 40.6 Acres

## Listings Price

\$25,000 per acre

## Commercial Zoning

Land



# Location Map

