

AVAILABLE FOR LEASE



**15322 Galaxe Ave  
Apple Valley, MN 55124**

TIM LITTLE | Chief Commercial Broker | 952.432.4900 | [TCtimlittle@gmail.com](mailto:TCtimlittle@gmail.com)  
SUSAN MALL | Commercial Associate | 651-402-5393 | [SusanM@MNRealEstateTeam.com](mailto:SusanM@MNRealEstateTeam.com)

## Building Specifications

- Great Visibility & Signage
- Ample Parking
- Elevator & ADA Compliant
- Multiple Private Offices
- Available for Versatile Use
- All Private Offices have Windows
- 13,000 (VPD)
- Underground Parking for Added Convenience
- 2 Blocks from Dakota County Hwy 42 on Galaxie Ave

### Building Size

75,395

### Available For Lease

97 - 3,006 SF

### Base Rates

\$625/month - \$650/month

### 2026 est. CAM & Tax

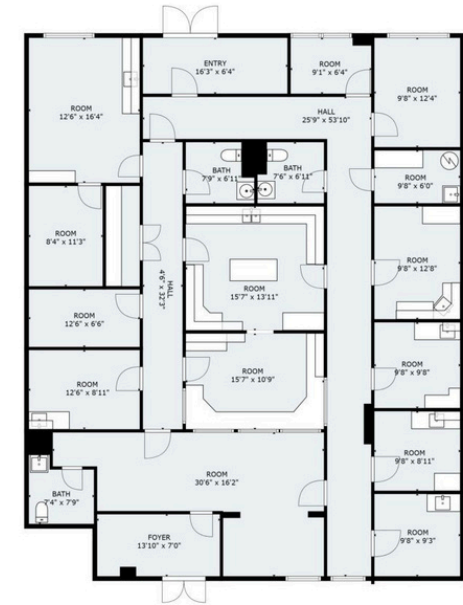
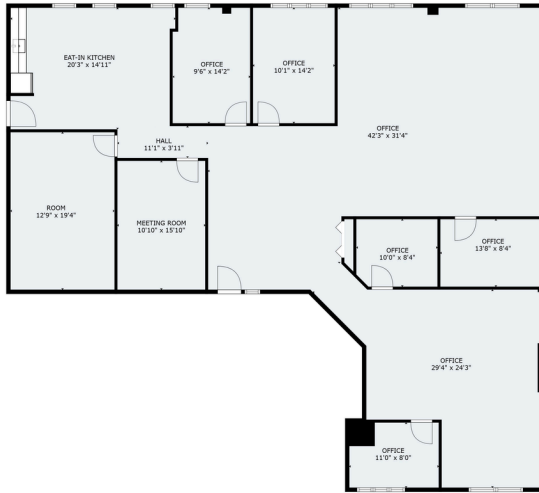
\$9.50/month

### Commercial Zoning

Office/Medical Office/Retail



# Available Spaces



## Suite 219

- Lease Rate: \$18/sqft/month
- Gross/Full-Service Lease
- 2,985 sqft
- 6 Private Offices
- 2 Meeting Rooms
- Eat-In Kitchen

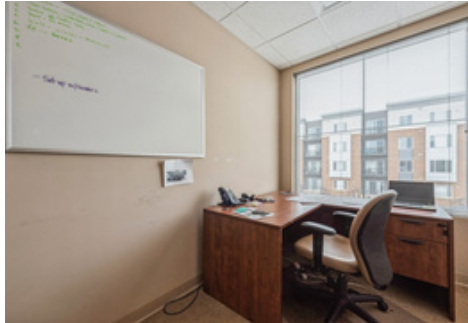
## Suite 203 C, G & H

- Lease Rates
  - C: \$650/month
  - G: \$625/month
  - H: \$625
- Gross/Full-Service Lease
- Available sizes
  - C: 118 SF
  - G: 97 SF
  - H: 105 SF

## Suite 105

- Lease Rate: \$30/sqft/month
- Gross/Full-Service Lease
- 3,006 sqft
- Set up for Medical Offices
- 11 Private Offices
- Front Foyer and Lobby
- 3 Bathrooms
- Eat-In Kitchen

# Property Photos



# Site Aerial & Retail Map



TIM LITTLE | Chief Commercial Broker | 952.432.4900 | TClittle@gmail.com  
SUSAN MALL | Commercial Associate | 651-402-5393 | SusanM@MNRealEstateTeam.com

This confidential memorandum is for the recipient only, may not be shared or reproduced without written consent from CROSSTOWN COMMERCIAL, contains unverified information provided solely for preliminary review, and must be independently verified by all prospective buyers at their own expense.